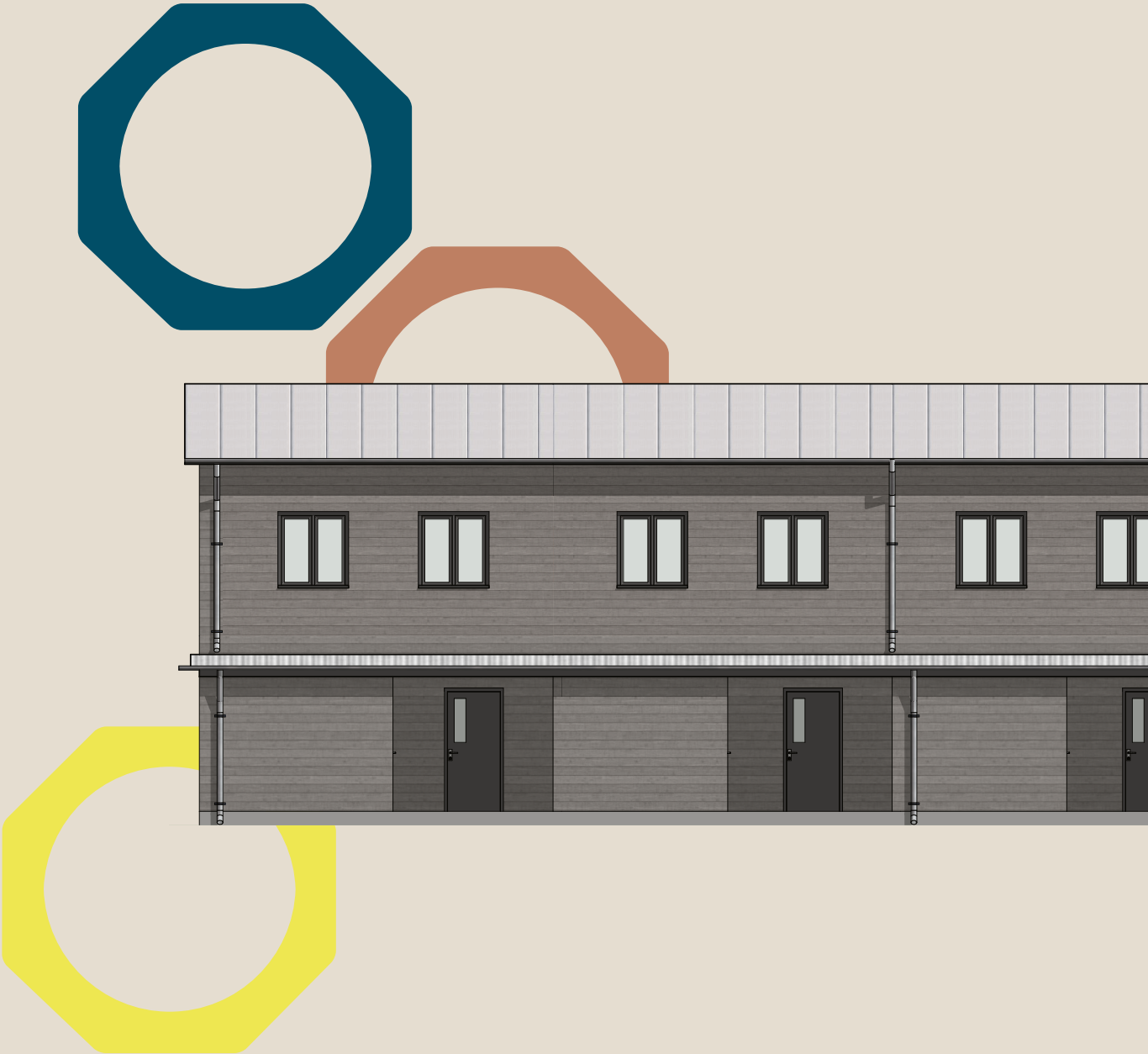


Kv. Kokaren Ursviken



KV. KOKAREN, URSVIKEN

Are you looking for a home near Skellefteå? Now's your chance. Contractor is building space-efficient townhouses in Ursviken.

After a period of stagnation in the housing market, Contractor Development introduces affordable condominiums in Kv. Kokaren. The concept is space-efficient townhouses with all essential functions - at a reasonable price.

The townhouses are built by us at Contractor - with local employees. We are a construction company with roots here in the north and are actively involved in creating a vibrant Norrland. This is a guarantee that we are wholeheartedly committed to the project in Ursviken.



Family Housing, Great Location

With a vision to offer affordable, sustainable, and modern homes for those needing extra rooms, we offer a unique opportunity. The location near nature, Northvolt, and community facilities in Ursviken provides comfortable and complete housing.

A Safe Investment

By offering a basic quality that can be enhanced, we ensure that each home can be adapted and developed over time. These condominiums are not only an investment in your own home but also in the expansive development of Skellefteå.

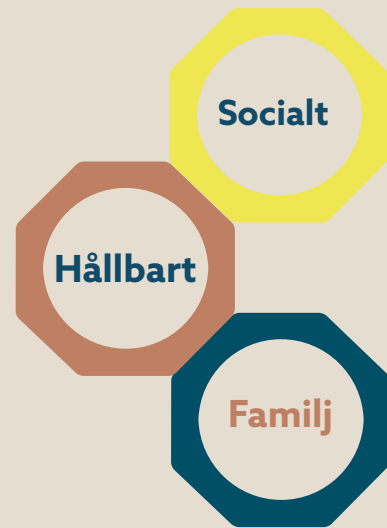


The images may differ from the actual project

Modern Homes

The placement of the building bodies is carefully considered to fit the location. The buildings are designed with the intention to meet the demand from the many house seekers in Skellefteå. Each apartment in our newly built townhouses is the result of careful consideration of how modern homes should be designed to effectively meet both today's and tomorrow's needs.

With a focus on sustainability, innovation, and flexibility, we offer you a secure housing transaction.



Sustainability at a Reasonable Price

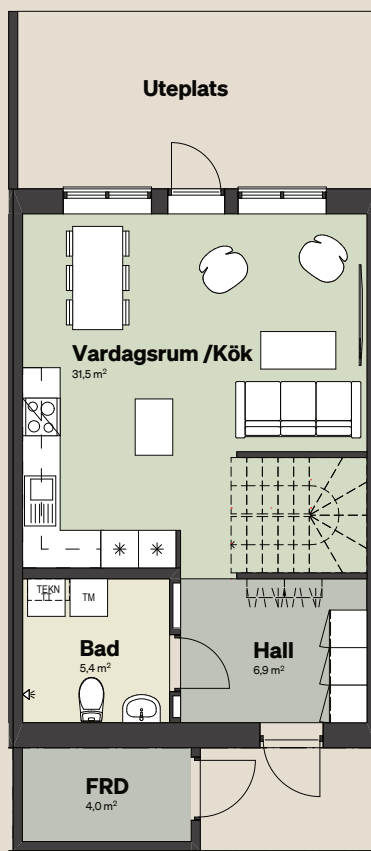
With a low introductory price and a reasonable monthly fee, this is a unique opportunity to enter the housing market with a sustainable and economically viable alternative in a newly produced townhouse. We focus on what is important for our target group right now while not compromising on long-term sustainability.

The Floor Plan

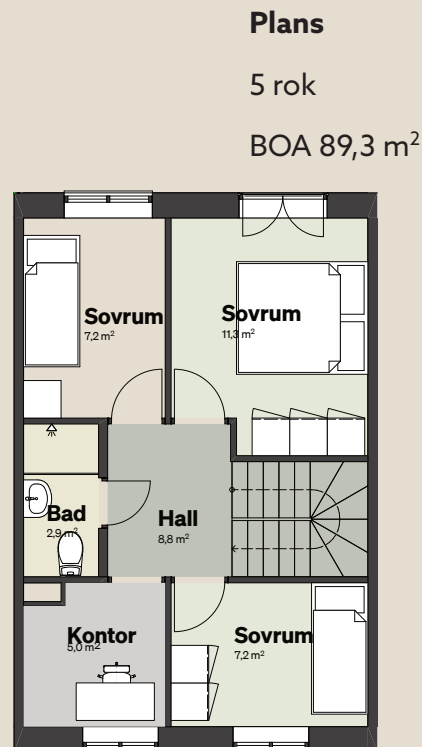
The floor plan begins right outside the front door, with the weather-protected entrance created under the roof between the generous storages belonging to each apartment. This way, a space is created for the stroller or bike, either locked in the storage or just under the roof, right outside the door. In addition to a hall, bathroom, kitchen, and living room, each townhouse has a patio connected to the lawn.

The flexible upper floor can be adapted depending on your needs. Two bedrooms with a generous living room. Three bedrooms and a study or perhaps four bedrooms to accommodate the entire family.

These optional floor plans are the only possible choices in the project. If the choice is made before construction starts, it is completely free of charge.



Plan 1



Plan 2

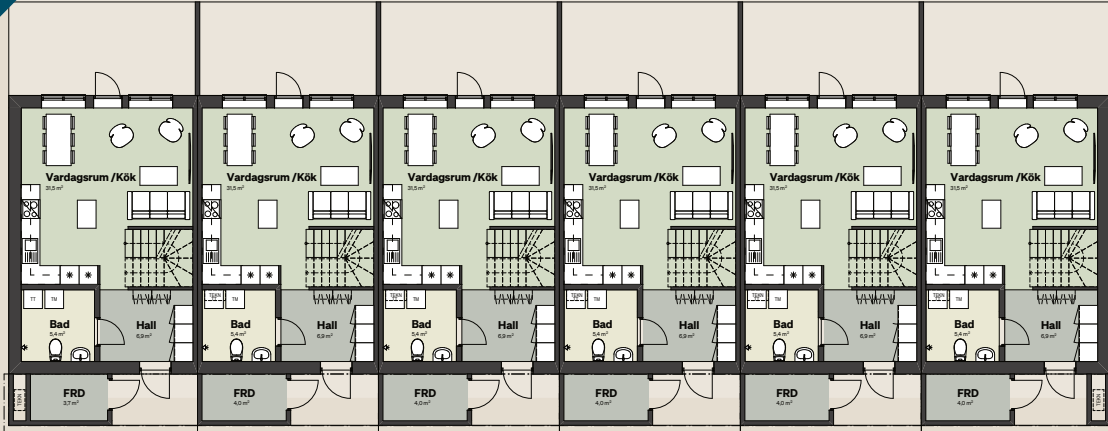
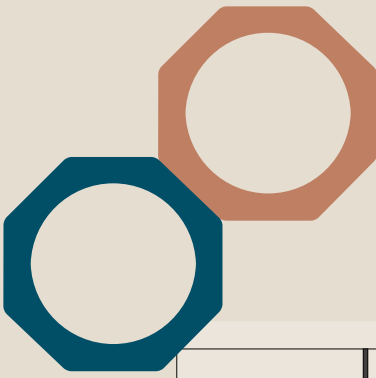
Plans

5 rok

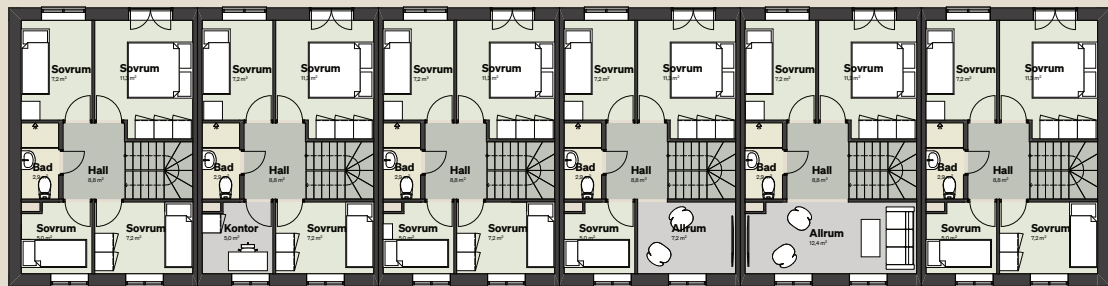
BOA 89,3 m²

Quick Facts

- Each apartment has the possibility for private parking.
- The size of the townhouse apartments is about 90 square meters GFA.
- The homes are located 4 kilometers walk or bike ride from Northvolt's factory.
- Heating via district heating, FTX ventilation.



Plan 1



Plan 2

Your Next Step

We at Contractor Development are not just builders; we are visionaries, collaborators, and your guide to sustainable living in Norrland. With these homes, we offer a unique chance to be part of an exciting future.



Front facade



Back facade

